



BL

SPECIAL FEATURES

- DESIGNED TO OEM REQUIREMENT
- USER FRIENDLY EXTRA ADJUSTABLE DIAL
- STAINLESS STEEL CONSTRUCTION
- SAVES INVENTORY MAINTENANCE
- SOCKET DIRECTLY WELDED TO CASE
- STANDARD FOLLOWED IN GENERAL EN 837-1

APPLICATIONS

REFINERIES, POWER, PHARMACEUTICAL, CHEMICAL & PETROCHEMICAL INDUSTRIES & NUCLEAR POWER PLANTS.

SPECIFICATIONS

STANDARD VERSION : 100 mm & 150 mm

Accuracy	: ±1.0% of F.S.
Ambient temperature	: - 25°C to + 65°C
Process temperature	: Max 300°C
Operating pressure	: 75% of Scale Value
Over pressure limit	: 130% Scale Value up to 600 kg/cm ² : 115% Scale Value above 600 kg/cm ²

Case & Bezel	: AISI 304 SS (Bayonet Type)
Bourdon	: AISI 316L SS
Socket	: AISI 316L SS (Directly Welded to Case)
Movement	: AISI 304 SS
Joints	: Tig Argon Arc Welding

Protection	: IP 65
Dial	: Aluminum, black graduation on white background
Safety Band Adjustment	: ± 45° Max.
Pointer	: Aluminum, black coloured Micrometer zero adjustable
Window	: Sheet Glass
Blow off Disc	: Neoprene
Gasket & Filling Plug	: Neoprene

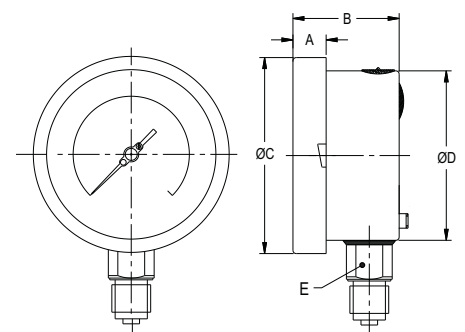


GLYCERINE FILLED VERSION (OPTION PY)

Accuracy	: ±1.0% of F.S.
Ambient Temperature	: Maximum 65°C
Process Temperature	: Maximum 65°C
Window	: Plexi Glass
Dampening Liquids	: Glycerin 99.7%
Other Features	: Refer Specification of Standard Version

Temperature effect:
The variation of indication caused by effects of temperature is to be calculated by below formula; which is to be added in the specified accuracy while measurement :- Formula : ± 0.04 x (t2 - t1) % of F. S.
where t1 = reference temperature (+20°C) and t2 = ambient temperature in °C.

DIMENSIONS - STANDARD VERSION



TYPE 2

NS	A	B	ØC	ØD	E	Weight in gram (With Box)
100	12.5	53	111	100	22	630.0
150	15	48	161	149	22	1060.0

Notes : • Drawings are not to scale. • All Dimensions are in mm. • NS = Nominal Size

BOURDON TYPE (EXTERNALLY SAFETY BAND ADJUSTABLE)

BL

RANGE TABLE

Note : Waaree offers National / International Scales like kPa, MPa, bar, psi, kg/cm² as per the customer requirement. Following are the example tables for single scale dials:

PRESSURE

SINGLE SCALE (kg/cm ² or bar)				
0/0.6	0/4	0/25	0/160	0/1000
0/1	0/6	0/40	0/250	
0/1.6	0/10	0/60	0/400	
0/2.5	0/16	0/100	0/600	

VACUUM & COMPOUND

SINGLE SCALE (kg/cm ² or bar)				
- 1/0	- 1/1.5	- 1/5	- 1/15	
- 1/0.6	- 1/3	- 1/9	- 1/24	

ACCESSORIES (Refer Datasheet for complete specifications)

EB COOLING TOWER	ED OVERLOAD PROTECTOR (GAUGE SAVER)	EH SIPHON
EC GAUGE COCK	* NEEDLE VALVE	EG SNUBBER

* Refer catalogue for Valves & Manifolds.

HOW TO ORDER

BASIC MODEL

CODE

NOMINAL SIZE

F H
100 mm 150 mm

TYPE OF MOUNTING

2 DIRECT BOTTOM ENTRY

GAUGE CONNECTION

4BM 1/2" BSP (M) (Standard)

4NM 1/2" NPT (M) (Standard)

RANGE

REFER RANGE TABLE

OPTIONAL EXTRAS

MINIMUM PREFERRED QUANTITY SHALL BE 300 NOS..

TI MONEL BOURDON & SOCKET (MONEL VERSION)**	SX SS TAG PLATE
FL INTEGRAL DAMPENING SCREW (MONEL)**	SW DIAL TAG MARKING
PW FIVE POINT CALIBRATION CERTIFICATE	TB HELIUM LEAK TEST
RR ENCLOSURE PROTECTION IP 66	TF CONFORMITY AS PER NACE MR 0175
SG OXYGEN SERVICE (FOR DRY VERSION ONLY)	RH CUSTOM DESIGNED DIAL
QB INTEGRAL DAMPENING SCREW (AISI 316 SS)	SA INTERNAL OVER PRESSURE STOP
PY DAMPENING LIQUID GLYCERINE FILLED	SB INTERNAL VACUUM STOP
QA DAMPENING LIQUID SILICON OIL FILLED*	RX SHATTERPROOF / SAFETY GLASS
KA ON - OFF TYPE VENT PLUG	RZ TOUGHENED GLASS
GH MATERIAL TEST CERTIFICATES***	

*Gasket & Filling plug of NBR. Consult factory for Viton.

**INTEGRAL DAMPENING SCREW WILL BE IN MONEL IF ORDERED. REFER OPTION FL.

*** MATERIAL TEST CERTIFICATES WILL BE PROVIDED FOR WETTED PARTS ONLY WITH CHEMICAL COMPOSITION TESTING. FOR OTHERS, PLEASE CONSULT FACTORY.

Ordering Example: BL - X - X - XXX - 0/10kg/cm² - XX

FOR OTHER OPTIONAL ITEMS, PLEASE CONTACT FACTORY FOR DELIVERY AND MINIMUM QUANTITY OF ORDER.

Note : Specifications and dimensions given in this product catalogue represents the state of engineering at the time of printing. Modifications may take place and materials specified may be replaced by others without prior notice.

Example

BL

X

X

XXX

0/10
kg/cm²

XX



TR Automatyka SP. z o.o.
ul. Lechicka 14; 02-156 Warszawa

Tel. (+48 022) 886 10 16
Tel. (+48 022) 846 50 37

www.trautomatyka.pl
biuro@trautomatyka.pl